



# EXPORT CONTROL UPDATES LAO PDR

Presented by  
Mr. Vangchai VANG  
Director of Import and Export Management Division  
Department of Import and Export  
Ministry of Industry and Commerce

# Content

- Brief introduction about Lao PDR
- Implementation of UNSCR 1540
- National Legislation related to 1540
- Development of Export Control in Lao PDR
- Structure of WMDGM-WG and Responsible Agencies
- Licensing scheme
- Challenges and Supports
- Roadmap

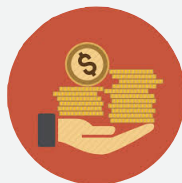
# Lao People's Democratic Republic

## Capital: Vientiane (Vieng Chan)



### GDP (US\$)

16.85 Billion USD  
World ranking: 116/190



### GDP per capita (US\$)

2,457 USD (2018)



### Economic Structure GDP Composition

Agriculture (18.3%)  
Industry (34.9%)  
Service (46.8%)



### Currency

(October 2018)  
Lao Kip (LAK)  
8,500 LAK per US\$



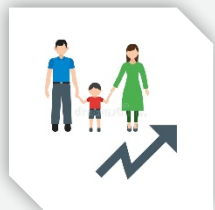
### Land area

236,800 sqm  
Land 230,800 sq km  
Water 6,000 sq km



### Religion

Buddhist (64.7%)  
Christian (1.7%)  
Folks religious (31.4%)  
Other (2.1%)



### Population

6.9 Million(2018)  
Word ranking: 106/233



### Language

Lao (Official)  
French  
English

# Implementation of UNSC resolution 1540

Nuclear Non-Proliferation Treaty (NPT) - 1970

Biological Weapons Conventions (BWC) - 1973

Geneva Protocol of (1925) - 1989

Treaty on the South East Asia Nuclear Weapons - 1996

Free Zone (Bangkok Treaty)

Chemical Weapons Convention (CWC) - 1997

2000 - Comprehensive Nuclear-Test-Ban Treaty (CTBT)

2001 - International Atomic Energy Agency (IAEA)

Safeguard Agreement for non-proliferation of  
Nuclear Weapon

2002 - International Convention for the Suppression  
of Terrorist Bombing (1997)

2008 - International Convention for the Suppression  
of the Financing of Terrorism (1999)

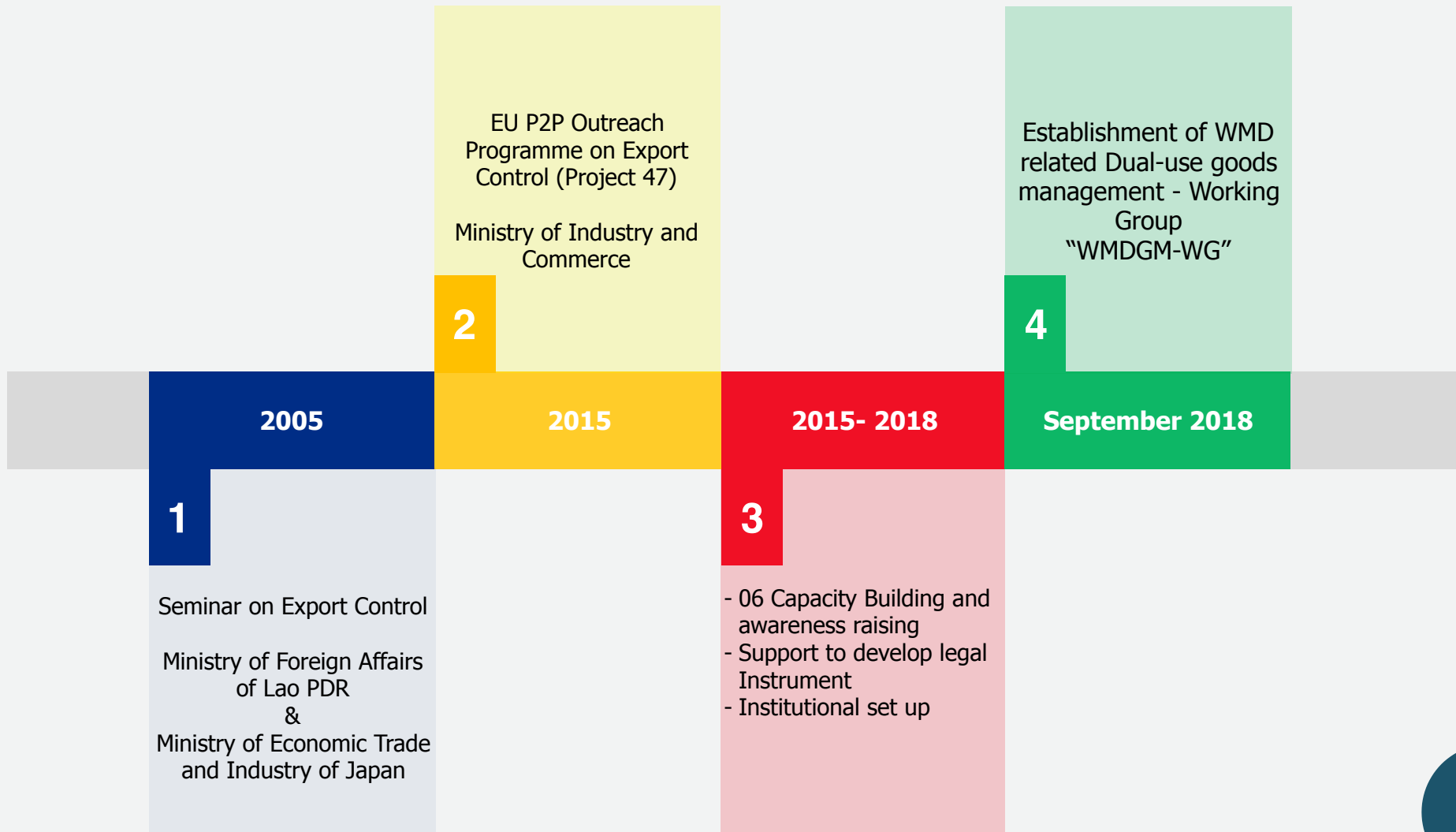
2010 - Convention on Physical Protection of Nuclear  
Material (CPPNM)

## National Legislation related to 1540 and Export control

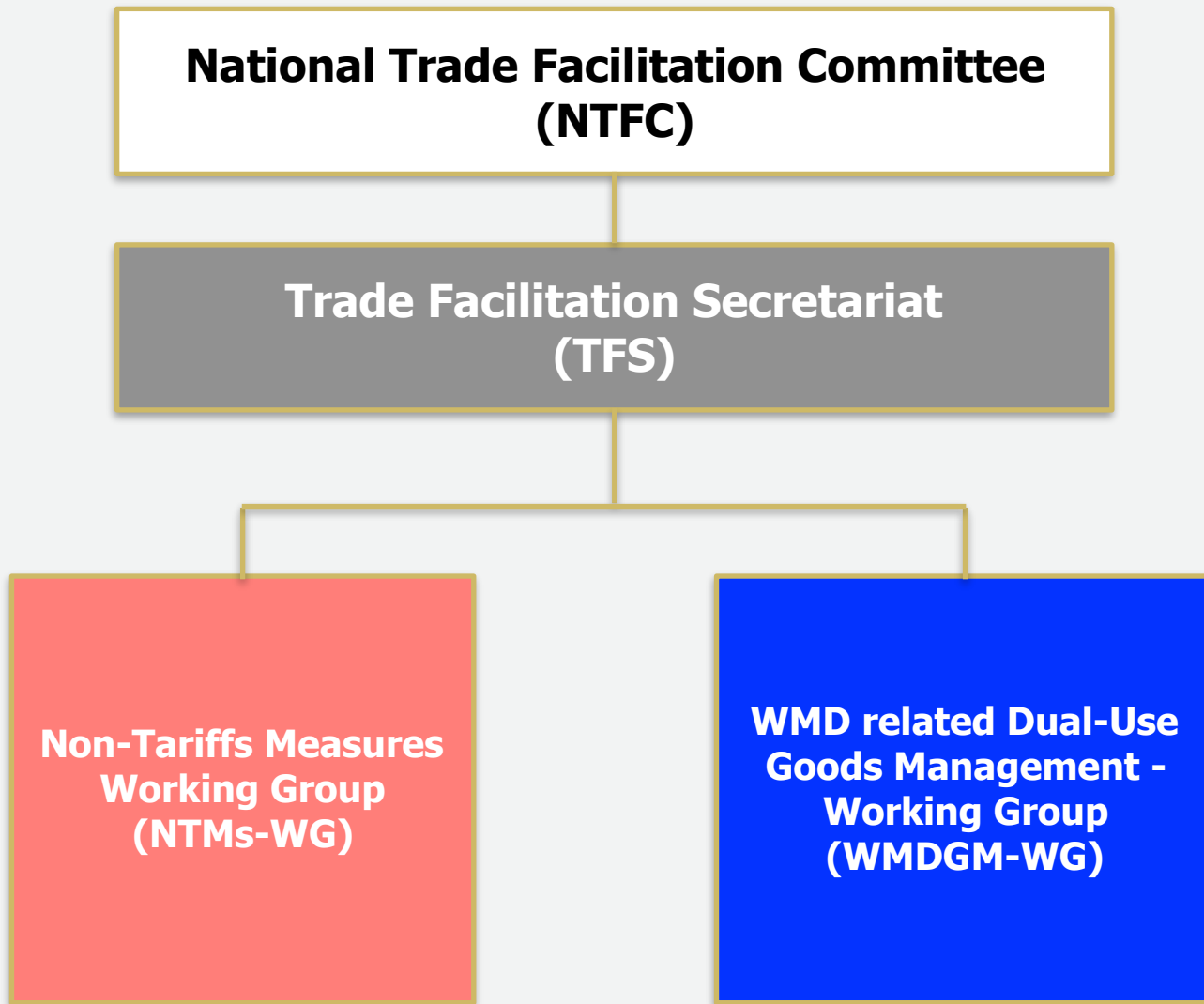


- Customs law
- Penal Code
- Law on Chemical
- Law on Telecommunication
- Decree 114 on import and Export of goods
- Decree 180 on import licensing
- Decision on transit of controlled goods though Lao PDR
- Decision on import for re-export and temporary export of controlled goods
- List of goods subjected to prohibition, automatic and non-automatic licensing

# Development of Export Control in Lao PDR



# Structure of the WDMGM-WG



# *Member of WMDGM-WG*



- Department of Import and Export, Ministry of Industry and Commerce
- Customs Department, Ministry of Finances
- Department of National Industry Defence, Ministry of National Defense
- Department of 203, Ministry of Public Security
- International Organization Department, Ministry of Foreign Affairs
- Department of Handicraft, Ministry of Industry and Commerce
- Department of Food and Drug, Ministry of Public Health
- Department of Mine Management, Ministry of Energy and Mines
- Department of Plantation, Ministry of Agriculture and Forestry
- Department of Science, Ministry of Science and Technology
- Civil Aviation Department, Ministry of Public Work and Transport
- Department of Pollution Control, Ministry of Natural Resources and Environment
- Department of Radio Frequency, Ministry of Post, Telecommunication

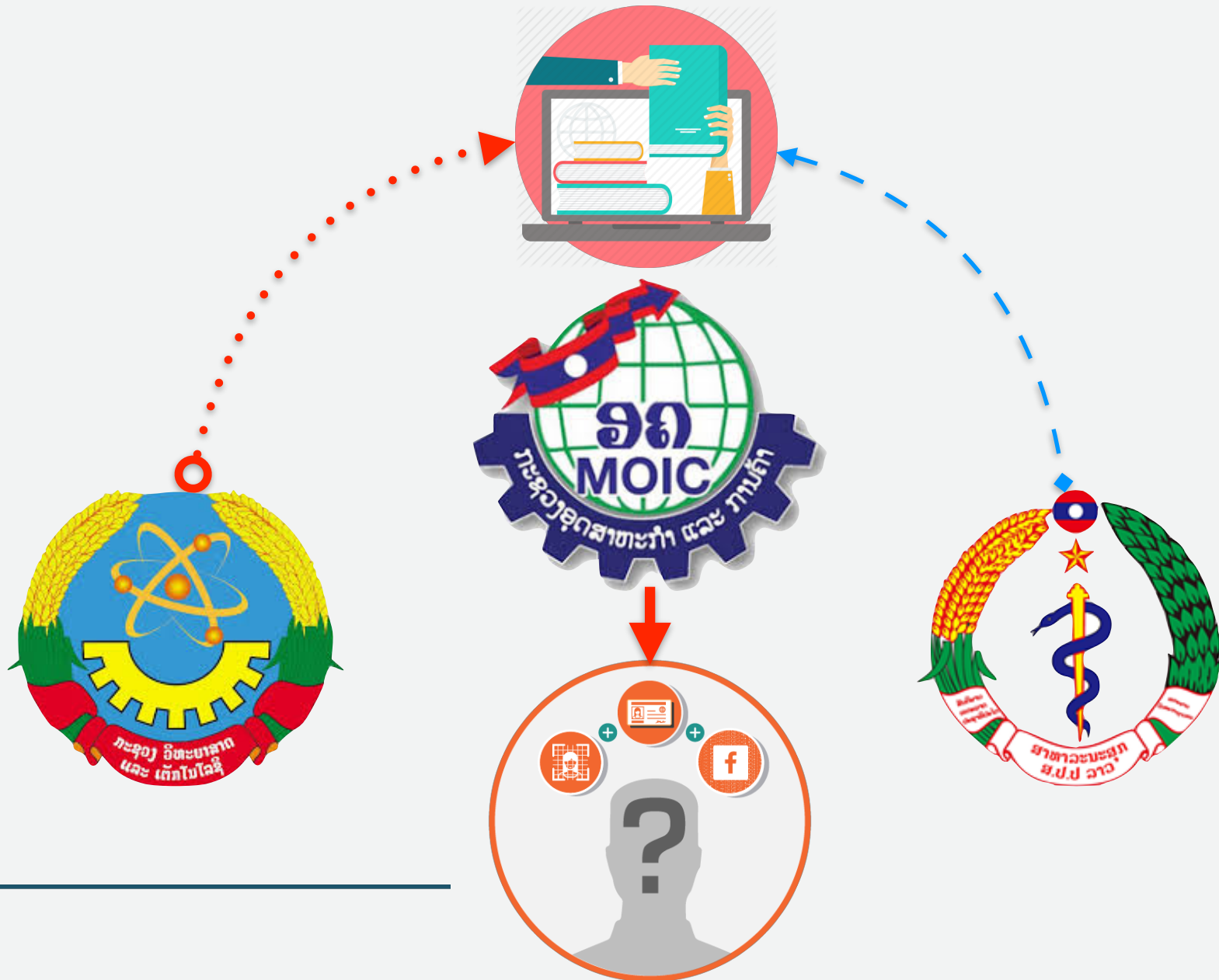


# Development of National Export Control Regime

- **Legal Instruments**
  - Draft Decree on Management of the Trade on Dual-Use Goods
  - Draft Decree on responsibilities and obligation of agencies and reporting for Anti-Money Laundering and Combatting the Financing of Terrorism.
- **List of DUGs:** EU single list
- **Focal point for export control**

Department of Import and Export  
Ministry of Industry and Commerce
- **Licensing authorities:**
  - Ministry of Industry and Commerce (Chemical and other DUGs)
  - Ministry of Public Health (Biological Agent)
  - Ministry of Science and Technology (Radioactive and Nuclear Materials)

# *Licensing mechanism*





## Strategic Trade Control Enforcement for Lao Customs authority and related authority

April 2018, Vientiane, Lao PDR





## High level capacity building workshop on dual-use Trade control legal framework of Lao PDR

September 2018, Vientiane, Lao PDR



## Industry Day

December 2018, Vientiane, Lao PDR



# Lao National Single Window (LNSW)



ລະບົບແຈ້ງພາສີປະຕູດຽວແຫ່ງຊາດ



ເພາະວ່າເວລາຂອງທ່ານມີຄວາມສຳຄັນ



LAO  
NATIONAL  
SINGLE  
WINDOW



ບົດນຳສະເໜີ

ເອກະສານກ່ຽວກັບລະບົບການ

ການເລືອກອົບຮົມ

ລິງທີ່ເປັນປະໂຫຍດ

ຂ່າວສານ

ຄຳຖາມທີ່ຖືກຖາມເປັນປະຈຳ

ຕິດຕໍ່/ຊ່ວຍເຫຼືອ

Users of the Lao National Single Window, please log in here

LOG IN

+ 856 30 7776999

[helpdesk@laonsw.net](mailto:helpdesk@laonsw.net)

ການທຳຄວາມຮູ້ຈັກກັບລະບົບແຈ້ງພາສີປະຕູດຽວແຫ່ງຊາດຢູ່ໃນເວັບໄຊ້ຂອງລະບົບ

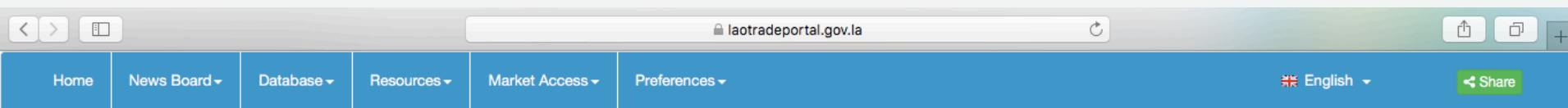
ບົດນຳສະເໜີ



ລະບົບແຈ້ງພາສີປະຕູດຽວແຫ່ງຊາດແມ່ນລະບົບ  
ເວັບໄຊ້ທີ່ນຳໃຊ້ເຂົ້າໃນການເຮັດໃຫ້ຂັ້ນຕອນ  
ການດຳເນີນການຄ້າລະຫວ່າງປະເທດມີຄວາມ  
ສະດວກສະບາຍຂຶ້ນ

ໃນປັດຈຸບັນນີ້, ດ້ວຍແນວຄວາມຄິດໃນການສ້າງແຜນງານການອຳນວຍຄວາມສະດວກທາງດ້ານການຄ້າ  
ຂອງບັນດາກະຊວງທີ່ກ່ຽວຂ້ອງ, ກະຊວງການເງິນ, ກະຊວງການຄ້າ ແລະ ກົມພາສີຂອງລາວແມ່ນກຳລັງ  
ຈັດຕັ້ງປະຕິບັດການນຳໃຊ້ເຄື່ອງມືແບບໃໝ່ຢ່າງໜຶ່ງ: ເຄື່ອງມືທີ່ວ່ານີ້ແມ່ນລະບົບແຈ້ງພາສີປະຕູດຽວ

# Lao PDR Trade Portal (LTP)



## Recent Uploads

- [Notification on the situation of an outbreak of Africa Swine Fever \(ASF\) in neighboring countries and around the world No. 1636/PMO.DRGA, dated 01 October 2018](#)
- [Notification on the Fee Implementation of Lao PDR for Transit, Entry, and Exit of Vehicle No.05666/CD, dated 27 September 2018](#)
- [Instruction on stop inspecting roadside checkpoint and improvement of the management of immigration and foreigner No. 096/MPS, dated 31 January 2011](#)
- [Statistic of Preferences](#)
- [Import and Export statistic under Trade Preferences of Lao PDR from 2013 - 2017](#)

## Latest Announcements



### [The government notified concerned sector for the spread of Africa Swine Fever Virus \(ASFV\) into the Lao PDR](#)

Prime Minister Office has issued a notification on the situation of an outbreak of Africa Swine Fever Virus (ASFV) in neighboring countries and around the world No. 1636/PMO.DRGA, dated 01 October 2018. This notification aims to prevent the spread of ASFV into the Lao PDR due to there is no vaccine available for this virus....[Read](#)

### [Fee of Lao PDR for transit, entry, and exit of vehicle](#)

Customs Department, Ministry of Finance has issued a Notification on the Fee Implementation of Lao PDR for Transit, Entry, and Exit of Vehicle No.05666/CD, dated 27 September 2018 in accordance with Edict on Fees and Service Charges No. 003/PO, dated 26 December 2012. This notification aims to manage the services and fees in a centralization as well as to ensure the fee implementation of Lao PDR for transit, entry, and exit of vehicle....[Read](#)

### [Department of Import and Export \(DIMEX\) has announced the implementation of service charter](#)

Department of Import and Export (DIMEX) has issued a notification on the Implementation of Service Charter of Department of Import and Export No.4186/DIMEX, dated 12 September 2018. This notification aims to improve and enhance the efficiency of the service at DIMEX as well as to reduce the procedures, time and complementary documents for import and export permits at least 50% by 2020, and transform the service to an electronic system, aiming to be increased by 03 times of the trade facilitation in 2025....[Read](#)



[More >>](#)

## Share Your Comments

The documents below drafted by Government are now open for public comment:

The draft of Standard For Liquefied Petroleum Gas  
The draft of Standard Bio Diesel For High Speed Engines  
The draft standard for Fuel Oils

[See all drafts >>](#)

## Daily Exchange Rates

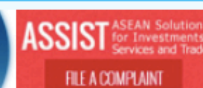
[Exchange Rates](#)

## Download Lao Font



[Click here to download](#)

## Contents



**26th Asian Export Control Workshop, 26-28 February 2019, Tokyo, Japan**

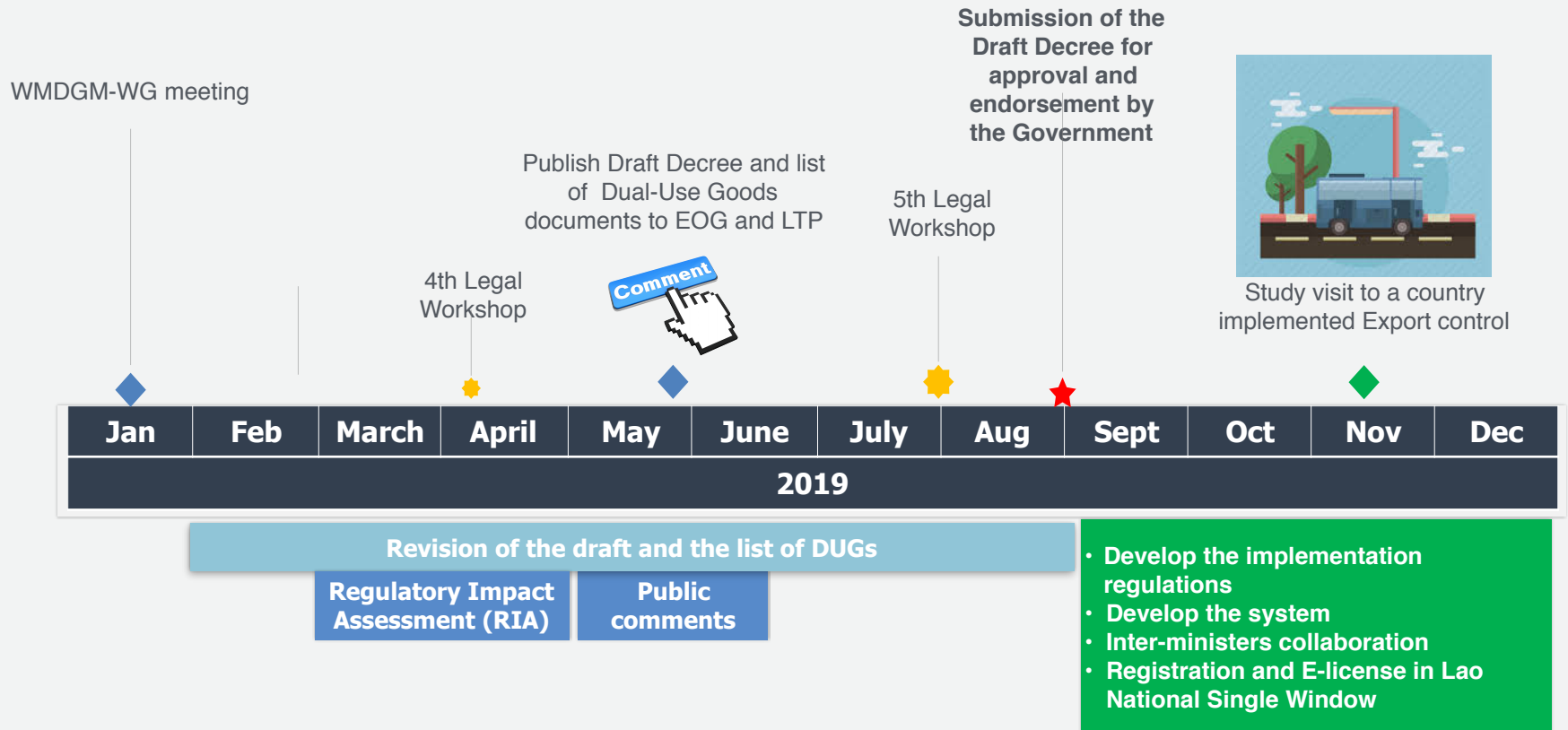
# Challenges



- Lack of experiences
- Limited personnel who posses with knowledge on Dual-use goods and WMD related materials
- Public awareness on Dual-use goods is still limited.
- Scattered information on DUGs use in industry



# Roadmap for 2019



## **Contact Information:**

Department of Import and Export  
Ministry of Industry and Commerce

Telephone: 021-412008

Facsimile: 021-454224

E-mail: [vangchai.v@laomoic.org](mailto:vangchai.v@laomoic.org)

website: [www.laotradeportal.gov.la](http://www.laotradeportal.gov.la)

